

Review of Prerequisite Skills

If you need help with any of the skills listed in purple below, refer to Appendix A.

1. **Fractions, percents, decimals** The following amounts are the total cost for the items including the 7% goods and services tax (GST) and an 8% provincial sales tax (PST). Determine the price of each item.

- a) watch \$90.85
- b) CD \$19.54
- c) bicycle \$550.85
- d) running shoes \$74.39

2. **Fractions, percents, decimals**

- a) How much will Josh make if he receives an 8% increase on his pay of \$12.50/h?
- b) What is the net increase in Josh's take-home pay if the payroll deductions total 17%?

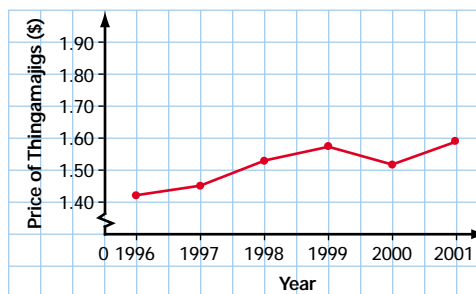
3. **Fractions, percents, decimals** What is the percent reduction on a sweater marked down from \$50 to \$35?

4. **Fractions, percents, decimals** Determine the cost, including taxes, of a VCR sold at a 25% discount from its original price of \$219.

5. **Mean, median, mode** Calculate the mean, median, and mode for each set of data.

- a) 22, 26, 28, 27, 26
- b) 11, 19, 14, 23, 16, 26, 30, 29
- c) 10, 18, 30, 43, 18, 13, 10
- d) 70, 30, 25, 52, 12, 70
- e) 370, 260, 155, 102, 126, 440
- f) 24, 32, 37, 24, 32, 38, 32, 36, 35, 42

6. **Graphing data** Consider the following graph, which shows the average price of thingamajigs over time.



- a) What was the price of thingamajigs in 1996?
 - b) In what year did the price first rise above \$1.50?
 - c) Describe the overall trend over the time period shown.
 - d) Estimate the percent increase in the price of thingamajigs from 1996 to 2001.
 - e) List the domain and range of these data.
7. **Graphing data** The table below gives the number of CDs sold at a music store on each day of the week for one week.

Day	Number of CDs Sold
Monday	48
Tuesday	52
Wednesday	44
Thursday	65
Friday	122
Saturday	152
Sunday	84

Display the data on a circle graph.